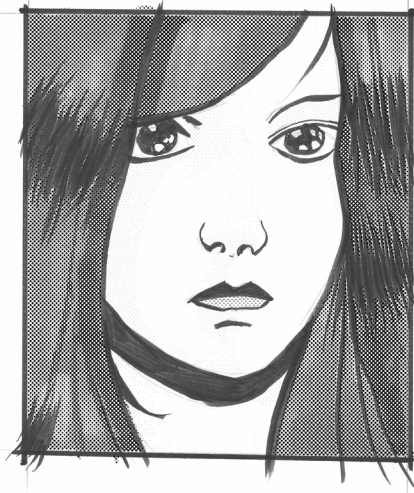


Get more free zines at
www.gniazdoswiatow.net



July 2024
International Zine Month

Girl, are you
represented?



godai

Tauriel Test

Jenn Northington just asks that in a given work, at least one woman be good at what she does.

Ellen Willis test

The story makes sense if the genders were flipped.

Strength is relative

Women are not described by underdeveloped masculine stereotypes.

Bechdel Test

At least two female characters talking not about men or their relationships.

The test was created by famous female comic author Alison Bechdel and her friend Liz Wallace.

Anti Freeze

No woman is killed, injured or assaulted with further other character's story.

This opposes the Gail Simone's trope of Women in Refrigerators, born from Kyle Ryner finding his girlfriend dead in the refrigerator to kick off the story. The trope is sadly popular.

Mako Mori Test

The work has at least one female character and that this character has an independent plot arc. She does not simply exist to support a male character's plot arc.

Mako Mori was a character in the "Pacific Rim" franchise. The movie failed Bechdel Test, but had a great Mako.

Sexy Lamp

There is female character that cannot be removed from the plot and replaced with a sexy lamp without affecting the story.

She is not a post-it board. And she is also not just some Manic Pixie Dream Girl.